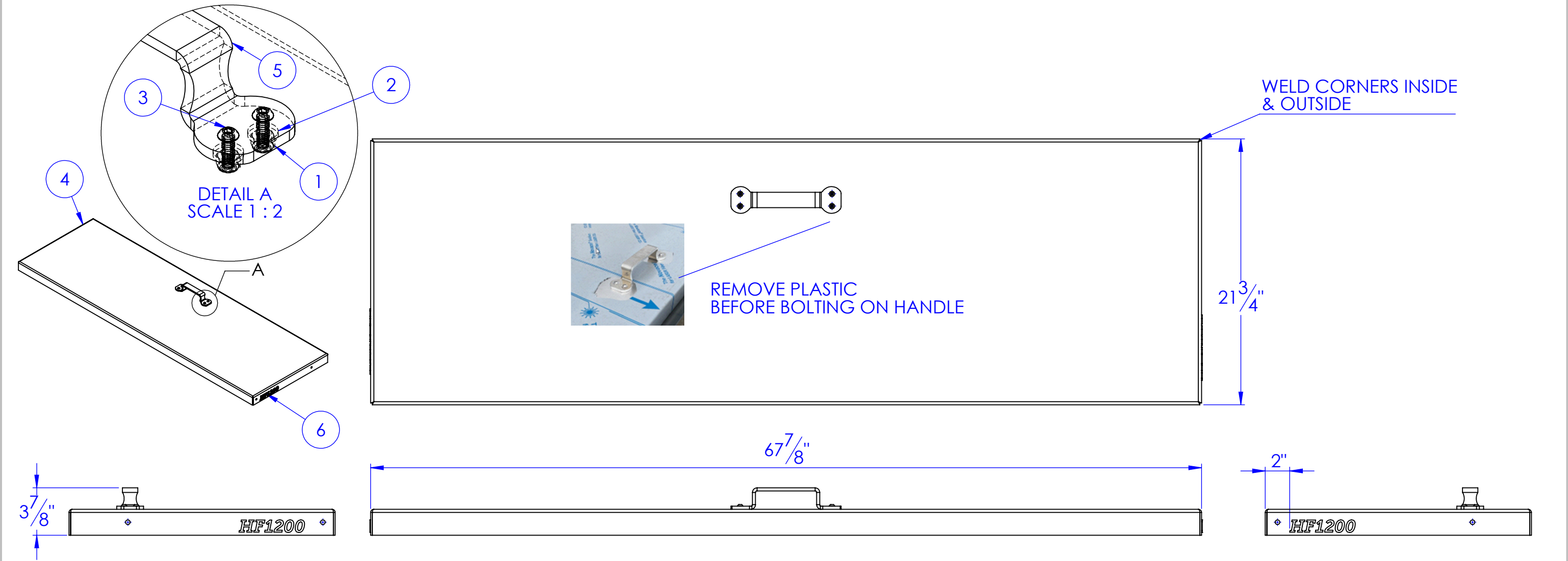


ITEM NO.	PART NUMBER	DESCRIPTION	Material	DRAWING #	QTY.	REVISIONS			
						REV.	DESCRIPTION	DATE	APPROVED
						A	INITIAL RELEASE	11/26/2022	HP

1	BO-.25-20 HNN SS	1/4"-20 Stainless Steel Nylon-Insert Locknut	18-8 Stainless Steel	STOCK	4
2	BO-.25x.625 OD FW SS	1/4" x 5/8" O.D. FLAT WASHER, STAINLESS STEEL	STAINLESS STEEL	STOCK	4
3	BO-.25x.75 BHCS SS	BUTTON HEAD BOLT, 1/4" X 3/4" SS	STAINLESS STEEL	STOCK	4
4	FP-HF12-LID	LID, HF1200, ALUMINUM	5052-H32 10ga.	30-2322	1
5	FP-hf18-lid handle	LID HANDLE, HF1800	5032-H36 1/4"	30-2321	1
6	LB-HF-HF1200	LID DECAL, HF-1200	.	LB-HF-HF1200	2




LEAVE PLASTIC
ON LID FOR SHIPPING

DRAWING LOCATION:
M:\Drawings\Ethan\Solidworks drawings\30 HYDRA FEEDER\0200 HF1200\1200 Fabrication
ASM. LOCATION:
M:\Drawings\Ethan\Solidworks drawings\SOLIDWORKS MODELS\HF-HF

PROPRIETARY AND CONFIDENTIAL
THE INFORMATION CONTAINED IN THIS
DRAWING IS THE SOLE PROPERTY OF TRIPLE
C INC. ANY REPRODUCTION IN PART OR
AS A WHOLE WITHOUT THE WRITTEN
PERMISSION OF TRIPLE C, INC IS PROHIBITED.

UNLESS OTHERWISE SPECIFIED:
DIMENSIONS ARE IN INCHES
TOLERANCES:
FRACTIONAL $\pm 1/16$
ANGULAR: MACH ± 1 BEND ± 1
TWO PLACE DECIMAL ± 0.10
THREE PLACE DECIMAL ± 0.05
MATERIAL
DO NOT SCALE DRAWING

	NAME	DATE	P.O. BOX 248, SABETHA, KS 66534 (785) 284-3674 FAX (785) 284-3931		
DRAWN	HEATH	11/26/2022			
PART #	Part #				
ASM #	HF-HF12-18 AL				
COMMENTS: HF-1200, ALUMINUM REPLACEMENT LID			SIZE B	DWG. NO. 30-1254	REV A
			SCALE: 1:20	WEIGHT: 24.08	SHEET 1 OF 1